



Quick Guide courtesy of  
County of Los Angeles

## QUICK GUIDE TO PIUMA RIDGE TRAIL

**DESCRIPTION:** This trail follows Piuma Road, just below and to the north of Piuma Ridge, and connects to other segments of the Backbone Trail on either end, Saddle Peak Trail to the east and Mesa Peak Motorway to the west. Most of Piuma Ridge Trail passes through forested areas. The tree cover provides a cooler trail experience on warm days. Look for great rock outcropping along the route. Use caution when crossing Piuma Road.

**DIRECTIONS:** Piuma Ridge Trail can be accessed via the Piuma Connector Trail from the main parking area at Tapia County Park, located approximately 3 miles south of Malibu Creek State Park on the west side of Las Virgenes Rd. Piuma Connector Trail follows the creek under the bridge to meet up the trail on the east side of Las Virgenes Rd.

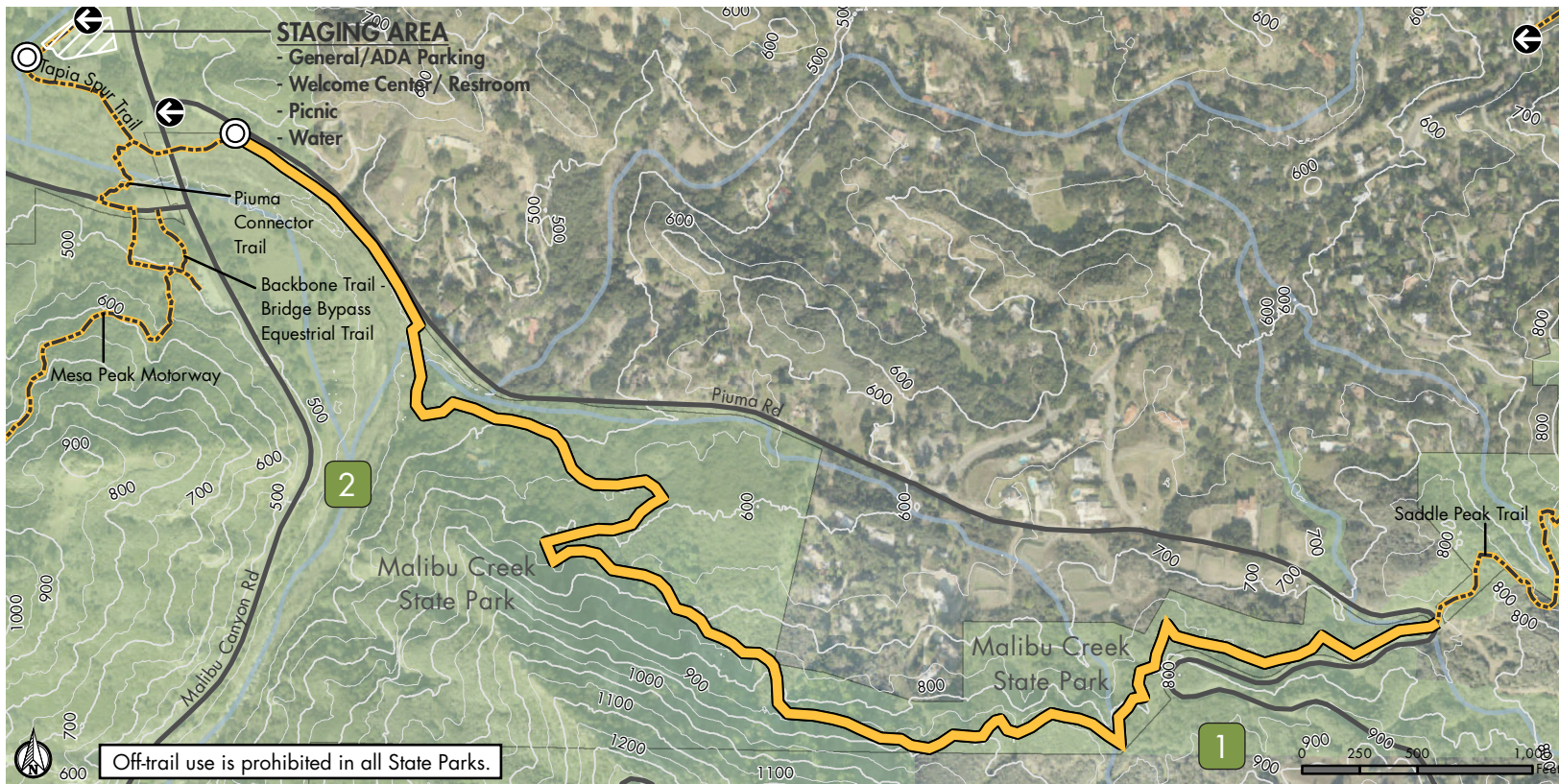
## SANTA MONICA MOUNTAINS NATIONAL RECREATION AREA



### MALIBU CREEK STATE PARK

Length: 1.59 miles

Elev. Gain: 449 feet

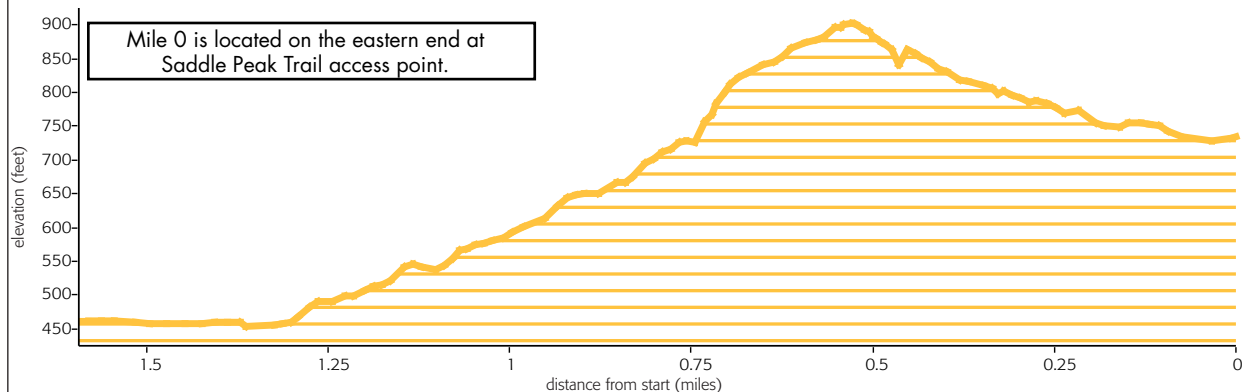


### Access & Features

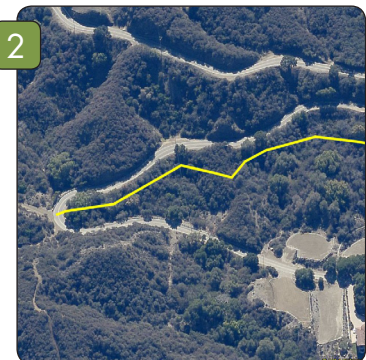
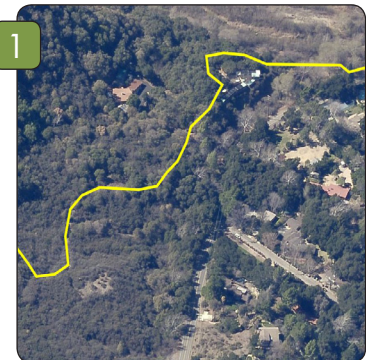
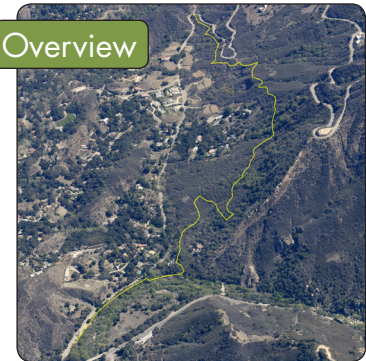
- Trailhead
- Trail Access Point

### Trail Type

- Natural Trail
- Public Parkland and Other Protected Open Space



### Overview



# QUICKGUIDE INFORMATION

COURTESY OF THE COUNTY OF LOS ANGELES | DEPARTMENT OF PARKS AND RECREATION

## SAFETY FIRST



In case of **EMERGENCY** dial 911.

For non-emergencies on County trails call the Los Angeles County Sheriff's Parks Bureau Dispatch at (800) 834-0064.

## HAZARDS ON THE TRAIL



Rattlesnakes occasionally sun themselves in the middle of the trail. If encountered, keep your distance and allow space for the snake to retreat.



Poison oak can be identified by groups of 3 leaves going up the branch. It's best avoided by staying on the trail and wearing long pants and long-sleeved shirts to prevent contact with skin.



Ticks are most often found in shaded, grassy areas off the beaten path. Stick to established trails and wear long pants to avoid contact. Check for ticks frequently, especially the scalp, waist and other dark places where they can hide.

## SHARE THE TRAIL



When trail conditions require a right of way for safe passage, **equestrian users have the primary right of way, hikers next and then mountain bikers**. When trail conditions allow and when there is width to safely pass, common courtesy should prevail for all users. Stand to one side of the trail and allow them to pass. When in a group, avoid blocking the trail. **Mountain bikers yield to all trail users**. Anticipate other trail users as you ride around corners. Mountain bikers traveling downhill must yield to all users, including other mountain bikers, headed uphill. In general, make each pass a safe and courteous one.

## WHAT TO BRING

- ✓ Water for you and your animal(s)
- ✓ Trail map
- ✓ High energy snacks
- ✓ Waste bags for your dog
- ✓ First aid kit
- ✓ Extra clothing
- ✓ Sunglasses/hat
- ✓ Sunscreen
- ✓ Insect repellent
- ✓ Trekking poles (optional)
- ✓ Flashlight (optional)

## ADDITIONAL RESOURCES

For information visit [trails.lacounty.gov](http://trails.lacounty.gov) or any of our partners' websites at [nps.gov](http://nps.gov), [parks.ca.gov](http://parks.ca.gov), [smmc.ca.gov](http://smmc.ca.gov), [lamountains.com](http://lamountains.com), or [rmc.ca.gov](http://rmc.ca.gov). Visitor Center for Santa Monica Mountains National Recreation Area, (805) 370-2300

## MAP DISCLAIMER

This map was created for informational purposes only. Reasonable effort has been made to ensure the accuracy of the maps, images, and data provided; nevertheless, some information may not be accurate.